

تم تحميل هذا الملف من موقع المناهج الإماراتية



أسئلة الامتحان النهائي القسم الورقي منهج انسابير

[موقع المناهج](#) ← [المناهج الإماراتية](#) ← [الصف الثالث](#) ← [علوم](#) ← [الفصل الثالث](#) ← [الملف](#)

تاريخ إضافة الملف على موقع المناهج: 2024-06-10 07:47:37

التواصل الاجتماعي بحسب الصف الثالث



اضغط هنا للحصول على جميع روابط "الصف الثالث"

روابط مواد الصف الثالث على تلغرام

[الرياضيات](#)

[اللغة الانجليزية](#)

[اللغة العربية](#)

[التربية الاسلامية](#)

المزيد من الملفات بحسب الصف الثالث والمادة علوم في الفصل الثالث

[أسئلة الامتحان النهائي القسم الورقي منهج بريدج](#)

1

[تدريبات مراجعة وفق الهيكل الوزاري](#)

2

[حل تدريبات امتحانية وفق الهيكل الوزاري](#)

3

[حل مراجعة نهائية وفق الهيكل الوزاري اختياري من متعدد](#)

4

[حل النموذج التدريبي للامتحان النهائي](#)

5

Circle the letter corresponding to the correct answer.

Part 1

Question

1

A rabbit growing thick fur in cold weather is a (an) .....



A	environmental trait
B	learned trait
C	behavioral trait



G03

1389AD

2

Question

Which of the following is a physical trait of the Galago?



- |   |                              |
|---|------------------------------|
| A | Having large feet and toes   |
| B | Staying awake at night       |
| C | Moving quickly through trees |



Question

3

A way of acting that an animal does not have to learn is called .....

- |   |                    |
|---|--------------------|
| A | instinct           |
| B | physical trait     |
| C | enviromental trait |



Question

4

Amphibians are animals that live .....



on land only

in water only

on land and in water

Question

5

The image shows some mammals. Mammals are animals that .....



are giving birth to live young

are hatched from eggs

are reproduced through budding

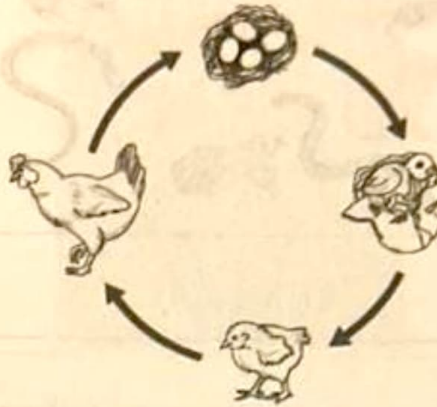




Question

6

Which animal goes through a life cycle SIMILAR to the stages of a chicken's life cycle?



A	Butterfly
B	Cat
C	Duck





Question

7

Which of the following living organisms goes through metamorphosis?



Butterfly



Chicken



Cat

Cat

Butterfly

Chicken



Question

8

Traits that come from parents are called .....

inherited traits

variation traits

adaptation traits



1389AD

9

Question

Which of the following **DOES NOT** need cells from male and female parents?

A

Giraffe giving birth to live young

B

Budding

C

Frog laying eggs

Question

10

Which of the following is **NOT** a stage of Tigers' life cycle?



A

Reproduction

B

Swimming

C

Growth





1389AD

Question

11

A sunflower seed will grow into a .....

- |   |                 |
|---|-----------------|
| A | bean plant      |
| B | tomato plant    |
| C | sunflower plant |

Question

12

Features that make the different organisms shown below unique are called .....



- |   |             |
|---|-------------|
| A | offsprings  |
| B | traits      |
| C | generations |





G03

13

1389AD

Question

A term that best describes plant growing from a seed to a young plant called.....



- A germination
- B reproduction
- C life cycle



Question

14

Plants that produce cones for reproduction are called .....



tomatoes

cherries

conifers

1389AD

Question

15

Look at the table. Which of the following traits best fits in the empty ?

Inherited Traits	
flower color	stem height
seed shape	leaf shape
	taste of fruit

dry leaves

type of root

number of blooms



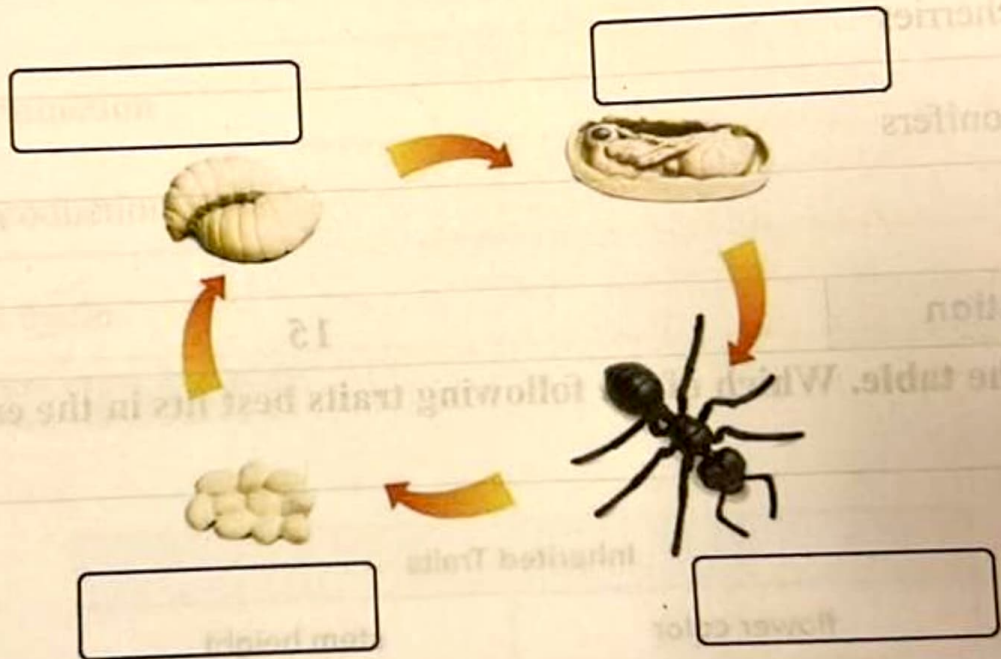


Question

16

The figure represents an insect life cycle. Label each stage using one of the following terms:

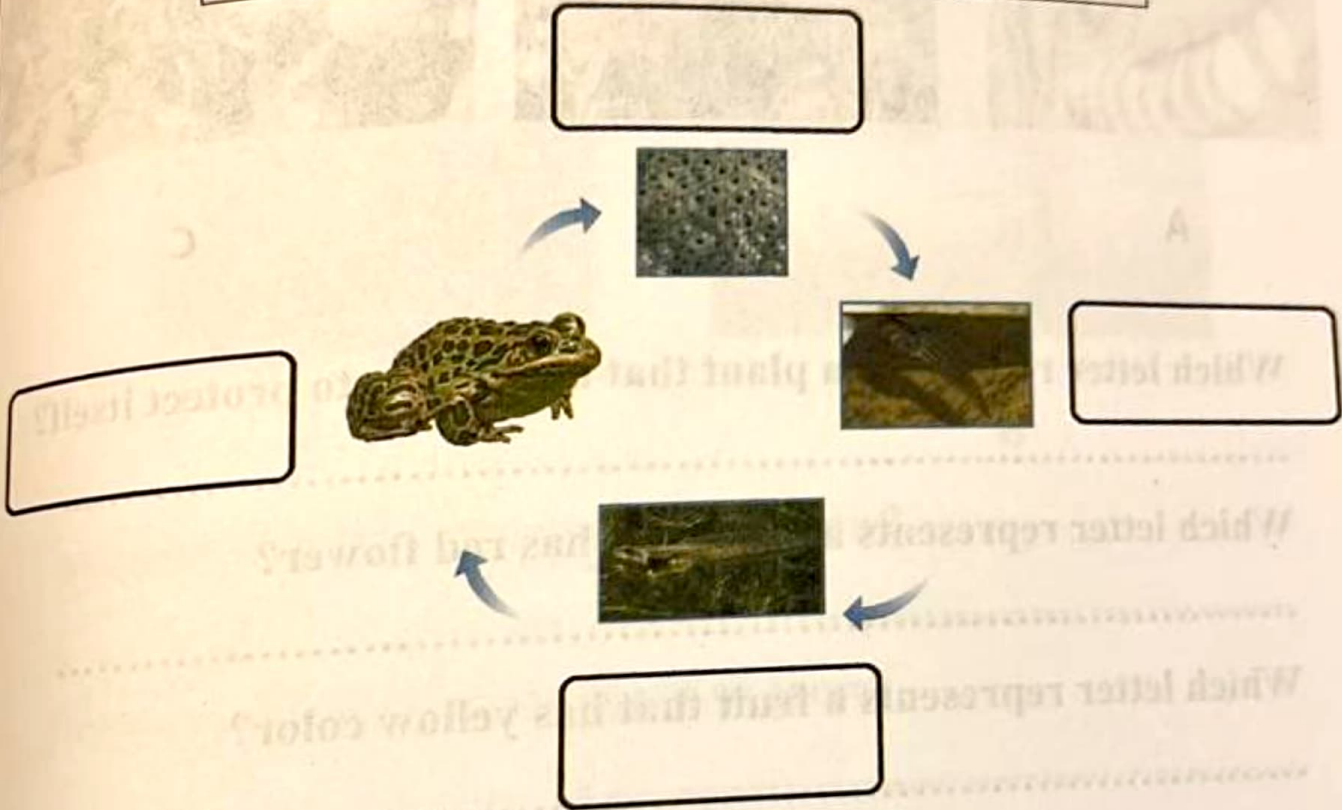
Larva – Egg – Pupa - Adult



Question

The figure represents a frog life cycle. Label each stage using one of the following terms:

Tadpole – Egg - Becoming an adult - Adult





Handwritten notes and a signature box at the top of the page.

G03

Science - Inspire

T3 - 2023-2024

1389AD

**Question**

18

The figure represents three different plants.



**A**



**B**



**C**

- I.  Which letter represents a plant that has thorns to protect itself?  
.....
- II. Which letter represents a plant that has red flower?  
.....
- II. Which letter represents a fruit that has yellow color?  
.....
- V. Which letter represents a fruit that has green color?  
.....

## Question

19

The figure represents two different plants.



A



B

I. Which plant takes shorter time to grow?

.....

II. Which plant needs more space to grow?

.....

III. Which plant has deeper roots?

.....

IV. Mention two of the plant's needs.

1. ....

2. ....





Question

The figure represents three different plants.



A



B



C

I. Which plant represents cherry trees?

.....

I. Mention two ways by which the pollen is transferred from the male part to the female part of a flower.

1. ....

2. ....

I. What role does the fruit play in a plant's life cycle?

.....

