

تم تحميل هذا الملف من موقع المناهج الإماراتية



*للحصول على أوراق عمل لجميع الصفوف وجميع المواد اضغط هنا

<https://almanahj.com/ae>

* للحصول على أوراق عمل لجميع مواد الصف الرابع اضغط هنا

<https://almanahj.com/ae/4>

* للحصول على جميع أوراق الصف الرابع في مادة تصميم ولجميع الفصول, اضغط هنا

<https://almanahj.com/ae/4design>

* للحصول على أوراق عمل لجميع مواد الصف الرابع في مادة تصميم الخاصة بـ الفصل الأول اضغط هنا

<https://almanahj.com/ae/4design1>

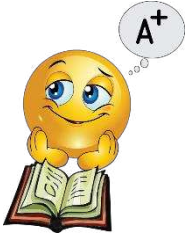
* لتحميل كتب جميع المواد في جميع الفصول للـ الصف الرابع اضغط هنا

<https://almanahj.com/ae/grade4>

للتحدث إلى بوت المناهج على تلغرام: اضغط هنا

https://t.me/almanahj_bot

تدريب على أسئلة الاختبار - الصف الرابع




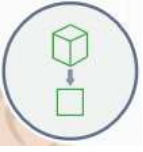
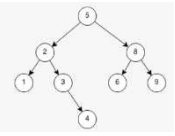
يرجى حل الأسئلة بعد الانتهاء من مراجعة الكتاب و الملخص

SECTION 1 – Matching

Match the word to the picture. Write the matching letter in the correct box.
The first one has been done for you

Question (1)

Terms

Explanations

Abstraction	A
Binary search	B
Input	C

Question (2)

Terms

Explanations

Output	A
Military robot	B
Algorithm	C

Question (3)

Terms




	
	
	

Explanations

Fun and entertainment robot	A
Barcode	B
Fan	C

Question (4)

Terms

Explanations

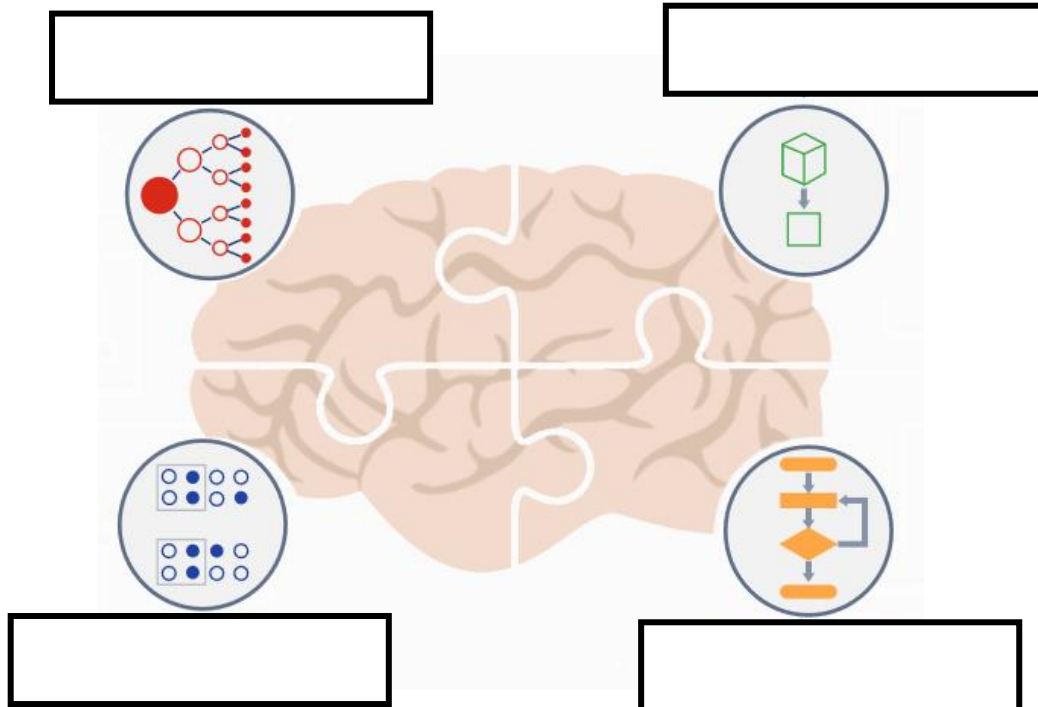
Spaceblocker	A
Control System	B
Motor	C

SECTION 2 – Labelling

Label the icons with answers from the answer bank.

Question (1)

(A) Algorithms	(B) Decomposition	(C) Pattern recognition	(D) Abstraction
----------------	-------------------	-------------------------	-----------------






Question (2)

(A) Input or Output	(B) Start or Stop	(C) Direction of flow	(D) Decision
---------------------	-------------------	-----------------------	--------------

Name	Symbol	Use
		The beginning or end of the programme
		Used when you want to display something on the screen or take the users input.
		Like your if statement, either yes or no to the question (decision).
		Connects the symbols. The arrow shows the direction of flow of instructions.





Question (3)

(A) Sensors/Input Sensors	(B) Control System	(C) Actuator/Output
---------------------------	--------------------	---------------------

 <p>Fan Motor Buzzer</p>	_____
	_____
 <p>Light Sensors Touch Sensors Sound Sensors Temperature Sensors</p>	_____

Question (4)

(A) Light sensors	(B) Sound sensors	(C) Temperature sensors	(D) Touch sensors
-------------------	-------------------	-------------------------	-------------------

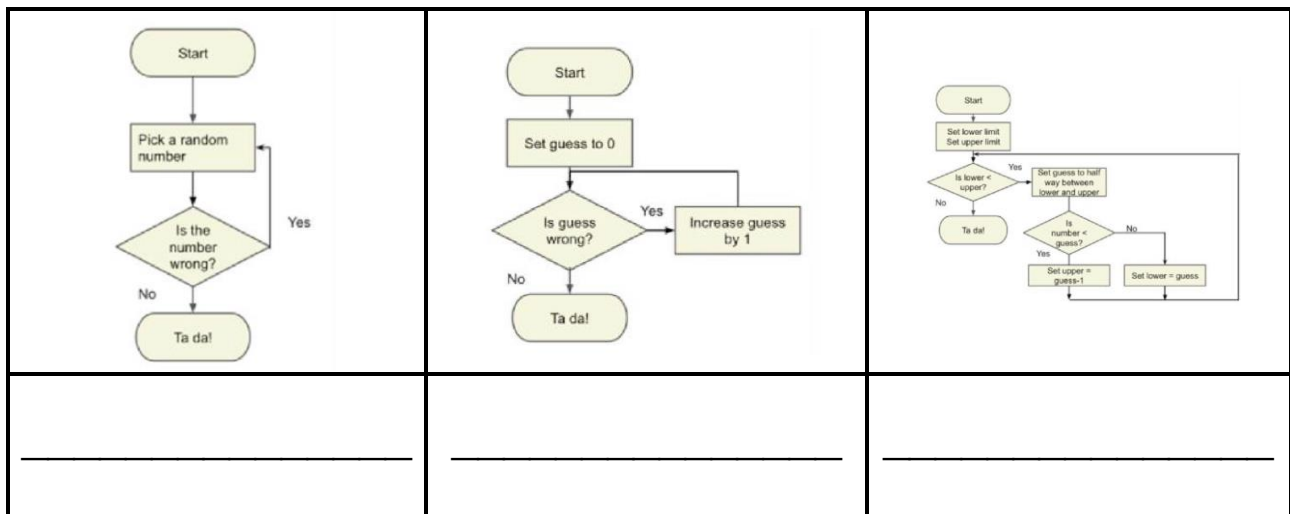
	_____
	_____
	_____
	_____

Question (5)

(A) Binary search

(B) Random search

(C) Linear search



SECTION 3 – Multiple Choice Questions

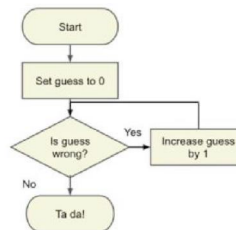
Choose and circle the correct answer for the images given below - A, B or C.

1. Which search method is the fastest to solve the problem?

- A) Random search
- B) Linear search
- C) Binary search

2. This is a _____

- A) Random search
- B) Linear search
- C) Binary search



3. This is _____

- A) Edware
- B) Edcomm
- C) Barcode



4. In programming \geq this means _____

- A) Greater than or equal to
- B) Greater than
- C) Less than

5. Breaking the problem down into chunks is _____

- A) Algorithm
- B) Recognition
- C) Decomposition

6. _____ tells a computer what task to do and how to do it

- A) planning
- B) Programming
- C) Computer

7. Ada Lovelace was

- A) Mathematician
- B) Doctor
- C) Inventor

8. This is _____

- A) Pseudocode
- B) Flowchart
- C) Java

1. Bring a bowl
2. Place the cereal in the bowl
3. Pour the milk on the cereal
4. Pour the milk in the glass
5. Get the spoon
6. Say: Bism Allah Al Rahman Al Raheem

9. They are _____

- A) Control System
- B) Actuator
- C) Sensors



10. They are _____

- A) Computer developer
- B) Artist
- C) Singer



11. Java, C++ and Python are _____

- A) Robots
- B) Programming languages
- C) Inventors

12. Brain of the robot

- A) Sensors
- B) Actuator
- C) Control System

SECTION 4 – True or False

Choose and circle the correct answer TRUE or FALSE.

- | | | |
|---|------|-------|
| 1. Robot is a machine. | TRUE | FALSE |
| 2. Computational thinking is about the objects that inform our technology | TRUE | FALSE |
| 3. Robotics is the science of robot. | TRUE | FALSE |
| 4. MBZIRC stand for The Mohamed Bin Zayed International Robotics Challenge. | TRUE | FALSE |
| 5. The programming language can be understood by the robot only. | TRUE | FALSE |
| 6. Robot is a list of instructions that tells a computer exactly what to do | TRUE | FALSE |
| 7. Computer is a machine that receives information or data (Output). | TRUE | FALSE |
| 8. Edison cannot play music. | TRUE | FALSE |
| 9. A linear search when we pick a random word. | TRUE | FALSE |
| 10. Edison can turn on its lights and follow the line only. | TRUE | FALSE |
| 11. Robots that look like humans are known as androids. | TRUE | FALSE |
| 12. We use a computer to control the robot. | TRUE | FALSE |
| 13. Edison can make a sound if it senses a danger. | TRUE | FALSE |

- | | | |
|--|------|-------|
| 14. Edison can avoid things. | TRUE | FALSE |
| 15. We must use technology in Computational thinking. | TRUE | FALSE |
| 16. A flowchart is a diagram that represents a set of instructions | TRUE | FALSE |
| 17. Algorithm is a set of instructions that helps you solve a problem step-by-step | TRUE | FALSE |