

تم تحميل هذا الملف من موقع المناهج الإماراتية



نموذج امتحاني الوحدة الرابعة Things Living منهج انسابير

[موقع المناهج](#) ⇨ [المناهج الإماراتية](#) ⇨ [الصف الرابع](#) ⇨ [علوم](#) ⇨ [الفصل الثالث](#) ⇨ [الملف](#)

تاريخ إضافة الملف على موقع المناهج: 2024-05-31 06:54:17

التواصل الاجتماعي بحسب الصف الرابع



اضغط هنا للحصول على جميع روابط "الصف الرابع"

روابط مواد الصف الرابع على تلغرام

[الرياضيات](#)

[اللغة الانجليزية](#)

[اللغة العربية](#)

[التربية الاسلامية](#)

المزيد من الملفات بحسب الصف الرابع والمادة علوم في الفصل الثالث

[تجميع أسئلة مقالية استعداد للاختبار الوزاري](#)

1

[أسئلة مراجعة عامة وفق الهيكل الوزاري](#)

2

[مراجعة الاختبار المركزي وفق الهيكل الوزاري](#)

3

[الهيكل الوزاري الجديد منهج انسابير المسار العام](#)

4

[الهيكل الوزاري الجديد منهج بريدج المسار العام](#)

5

TOPIC:	Living Things	
UNIT/TITLE	Unit 4 - MOCK EXAM -	
TOTAL SCORE:	/85	
DATE:	/05/2024	
NAME OF STUDENT:		Grade 4:
NAME OF THE EDUCATOR	Ms. Patty (Science – Gr. 4(A-G))	
MODERATOR	Ms. Wafa – VP – Science/English	

Question 1: p. 14

(3)

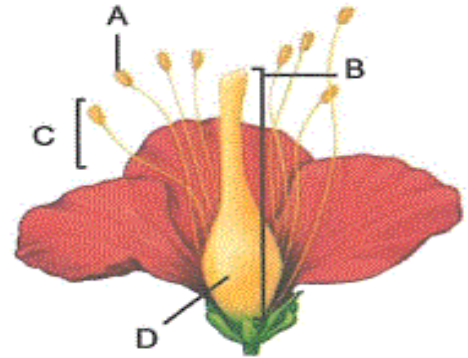
The adjacent figure demonstrates the flower parts.

1. Label letters (B) and (D).

- Letter (B) is
- Letter (D) is

2. What is the name of the male part of the plant labeled with the letter (C)?

.....

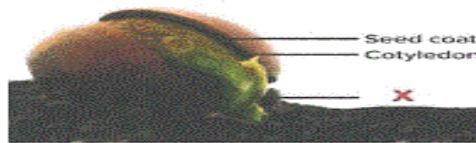


Question 2: p.15

(2)

The figure below shows a plant seed.

Which of the following is represented by the letter (X)?



A	A fruit
B	An embryo
C	A cone
D	A flower

Question 3: p. 12

(4)

The adjacent figure shows the sunflower plant parts.

A. Which letter takes in water and dissolved nutrients from the soil?

.....

B. Label letter A.

.....

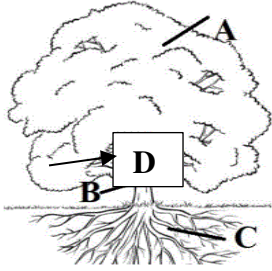
C. The plant releases water vapor through the small openings in the underside of leaves.

This process is called.....



Question 4:

(2)



A	A
B	B
C	C
D	D

Which of the following letters represents a part that helps the plant get water?

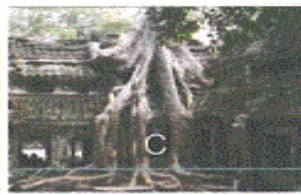
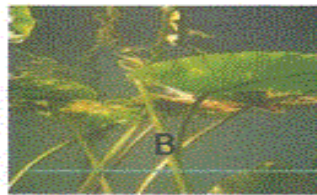
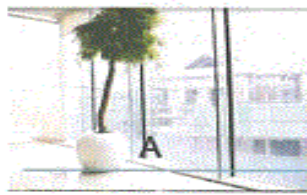
Question 5:

p.17

(4)

Fill in the blanks in the table below using the word bank.

Hydrotropism – Gravitropism – Phototropism – Thigmotropism



.....

.....

.....

.....

Question 6:

p.14

(2)

What does the female part of the plant produce for fertilization?

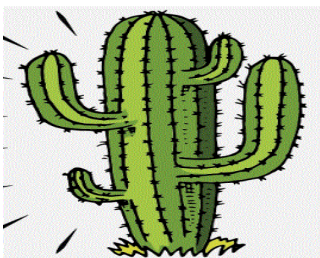
A	Egg
B	Pollen
C	Powder
D	Pistil

Question 7:

p.16

(2)

Which of the following is an adaptation used by this plant to survive in hot and dry environment?



A	Thick stems to hold water.
B	Deep roots to soak up the rain.
C	Flat surface that faces the sun.
D	White thorns to attract animals.

Question 8: p.13

(2)

Which of the following plant's structures allows gases to move in and out of the plant?

A	The stomata
B	The roots
C	The flowers
D	The seeds

Question 9: p.17

(2)

Which of the following best defines the thing or event that causes a given response?

A	Tropism
B	Adaptation
C	Habitat
D	Stimulus

Question 10: p.32

(2)

What do butterflies use to taste leaves before laying their eggs?



A	The feet
B	The nose
C	The antenna
D	The wing

Question 11:

(2)

Which of the following is **NOT** a **sense** animals use to survive in their environment?

A	Smelling
B	Movement
C	Hearing
D	Taste

Question 12:

(2)

Salma injured one of her eyes while playing in a sand box. Since her injury her vision is blurry. Explains why the blurriness is occurring?

A	Her eye is not focusing light properly.
B	Her eye is absorbing too much light.
C	Her eye is reflecting too much light.
D	Her eye is blocking some light.

Question 13:

(2)

The figure below represents an owl standing on a tree. Which of the following represents the kind of the structural adaptation shown?



A	Mimicry
B	Migration
C	Camouflage
D	Hibernation

Question 14:

(2)

Most Prey's have eyes on theof their head.

A	top
B	sides
C	front
D	back

Question 16:

p.34

(2)

Which of the following best defines the physical trait or behavior that helps an organism to survive?

A	Habitat
B	Adaptation
C	Response
D	Stimulus

Question 17:

p.78/79

(2)

Which property of light does the picture below represent?



A	Refraction
B	Absorption
C	Reflection
D	Translucent

Question 23:

p.17

(2)

The plant response shown in the figure below is known as



A	Thigmotropism
	Phototropism
C	Hydrotropism
D	Gravitropism

Question 18:

(2)

Which of the following body parts does a fish use to breathe?



A	Fines
B	Eyes
C	Lungs
D	Gills

Question 19:

p.64

(2)

What does the central nervous system consist of?

A	Brain and spinal cord
B	Brain only
C	Spinal cord only
D	Nerves

Question 20:

p. 62/63

(2)

Which of the following best defines the process of finding an object by using reflected sound or echoes?



A	Hearing
B	Vision
C	Smell
D	Echolocation

Question 20.

P.33

(2)

Question

3

Which of the following is considered an **internal** structure for animals?

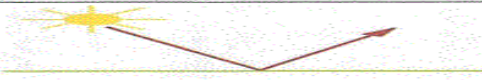
A	The ear
B	The stomach
C	The beak
D	The fur

Question 21:

p.78

(2)

Which of the following best defines the bouncing of light waves off a surface?



A	Retention
B	Refraction
C	Reflection
D	Absorption

Question 22:

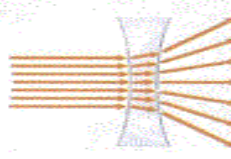
p.79

(3)

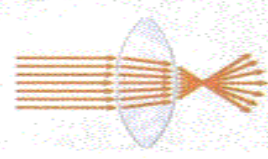
Use the figure below to answer the following questions.



flat lens



concave lens



convex lens

A. Which lens makes the light's path shifts a little, but its final direction does not change?

.....

B. Which lens is used in eyeglasses for people who are nearsighted?

.....

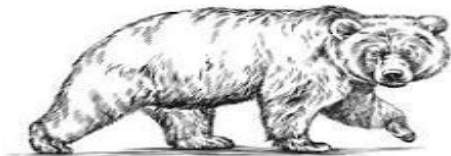
C. Which lens is used in eyeglasses for people who are farsighted?

.....

Question 24:

p.35

(2)



A	Eating
B	Drinking
C	Breathing
D	Running

The grizzly bears **prepares** for hibernation during November. Which of the following processes happens for the bear during hibernation?

Question 25:

p.64

(2)

The brain is part of which system?

A	Circulatory system
B	Central nervous system
C	Peripheral nervous system
D	Digestive system

Question 26:

(2)

How do animals use camouflage to survive?

A	Standing out from their environment
B	Imitation of other animals
C	Blending into their environment
D	Making warning calls

Question 27:

p.63

(2)

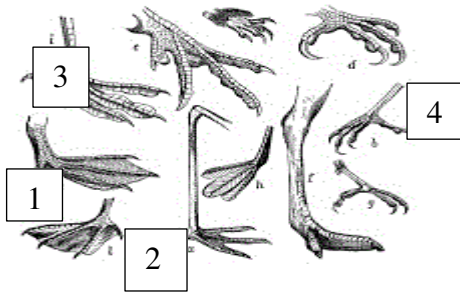
Which of the following animals **can't use** Echoes?

A	Whales
B	Snakes
C	Dolphins
D	Bats

Question 28:

(2)

In the figure below, which number represents a webbed foot that helps a bird swim?



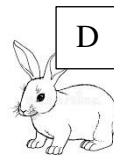
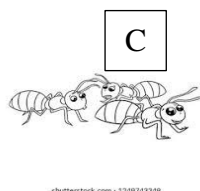
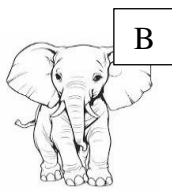
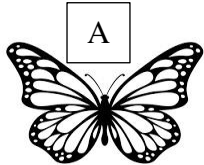
A	1
B	2
C	3
D	4

Question 29:

p.33

(2)

Which animals in the images below uses their feet to taste leaves?



A	A
B	B
C	C
D	D

Question 30:

Which of the following adaptations will help an organism find food? (2)

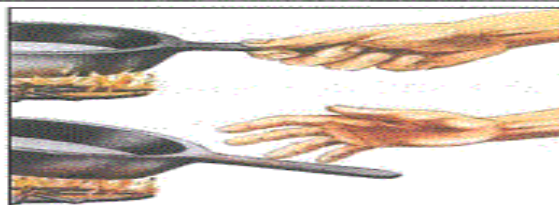
A	Sense of smell
B	Fur
C	Strong jaws
D	A shell

Question 31:

p.65

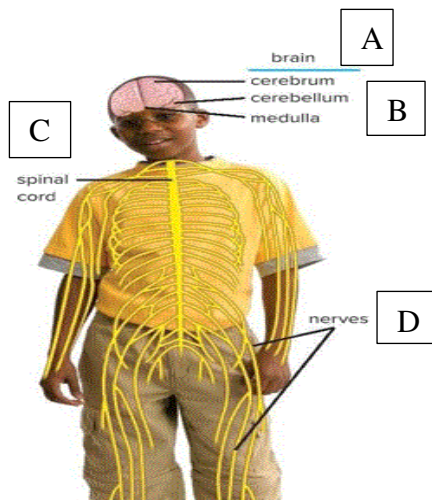
(2)

The figure below shows a reflex action upon touching hot object. Which of the following is controlling the reflex?



A	The spinal cord
B	The brain
C	The stomach
D	The kidneys

In the figure below, which of the following letter represents the organ that is responsible for the reflex in the body?

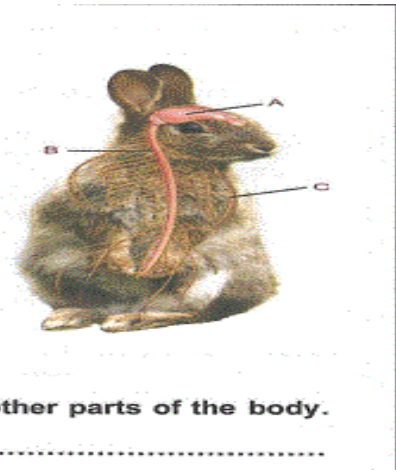


A	A
B	B
C	C
D	D

The adjacent figure shows the nervous system of an animal.

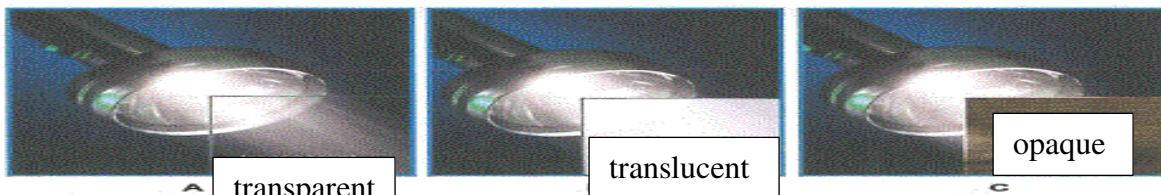
1. Label the letters (A), (B) and (C).

- Letter (A) is
- Letter (B) is
- Letter (C) is



2. Define the nerves that are not part of the central nervous system and receive sensory information from other parts of the body.

The figure below shows three different materials that light passes through.



1. Which letter represents a material that let all the light through so objects on the other side can be seen clearly?

2. Which letter represents a material that let some light through so objects on the other side appear blurry? Give an example.

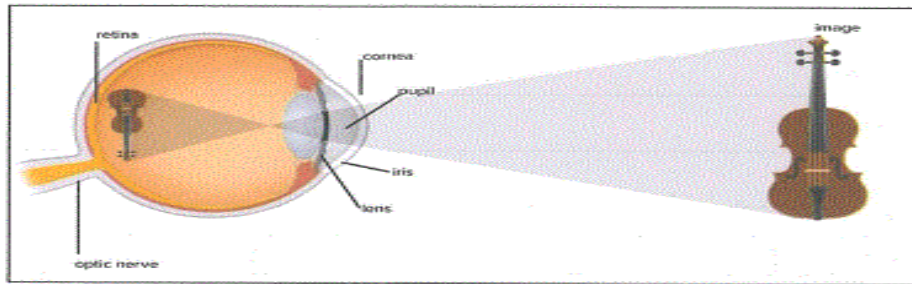
Example:

3. Which letter represents a material that completely blocks the light from passing through? Give an example.

Example:

The figure below shows the human eye.

Which of the following is the correct path that light passes through?



A	Cornea → Pupil → Lens → Retina
B	Pupil → Cornea → Lens → Retina
C	Pupil → Cornea → Retina → Lens
D	Cornea → Pupil → Retina → Lens