

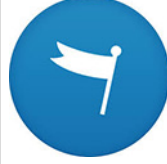
شكراً لتحميلك هذا الملف من موقع المناهج الإماراتية



معاني مفردات درس أجزاء النبات

[موقع المناهج](#) ← [المناهج الإماراتية](#) ← [الصف الرابع](#) ← [علوم](#) ← [الفصل الثالث](#) ← [الملف](#)

التواصل الاجتماعي بحسب الصف الرابع



روابط مواد الصف الرابع على تلغرام

[الرياضيات](#)

[اللغة الانجليزية](#)

[اللغة العربية](#)

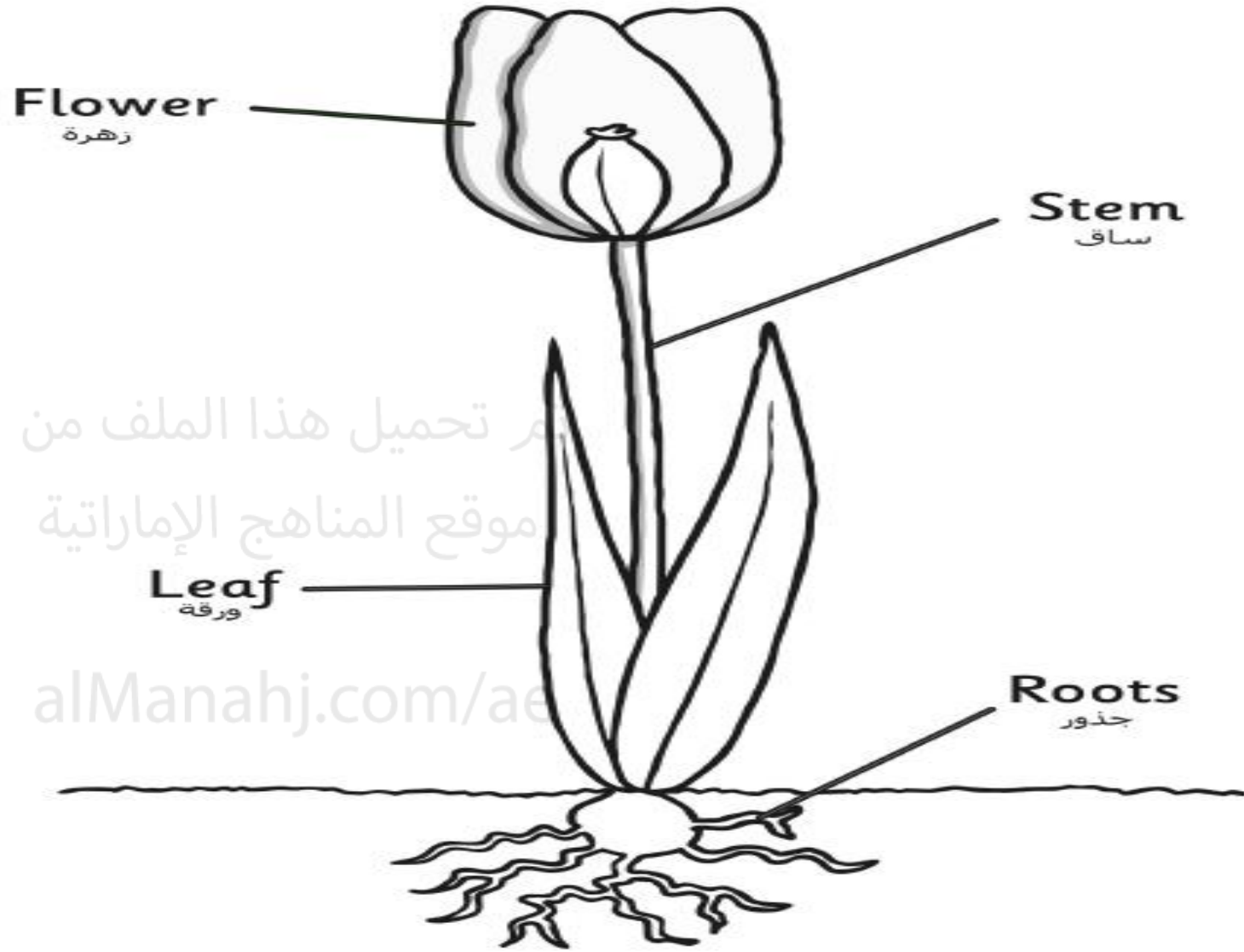
[التربية الاسلامية](#)

المزيد من الملفات بحسب الصف الرابع والمادة علوم في الفصل الثالث

أسئلة الامتحان النهائي الورقي انسابير	1
أسئلة الامتحان النهائي الورقي بريدج	2
تدريبات امتحانية وفق الهيكل الوزاري الجديد	3
مراجعة امتحانية ملخص وحلول وفق الهيكل الوزاري الجديد انسابير	4
حل أسئلة الامتحان النهائي التعويضي ماحروهيل	5

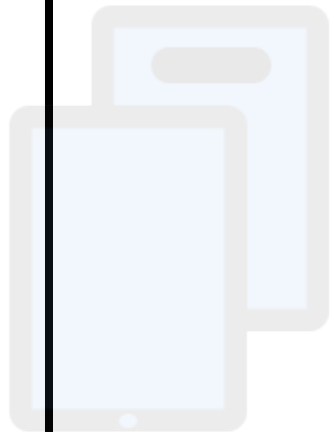
Parts of a Plant

أجزاء النبات



محميل هذا الملف من
موقع المناهج الإماراتية

alManahj.com/ae



5 Things Plants Need



Light



Water



Nutrient
s



Space
to Grow



Air

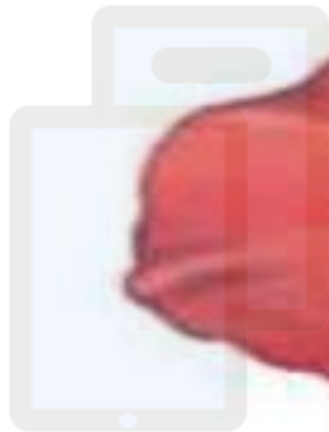
What do
plants
need? ماذا
تحتاج النباتات؟

anther with pollen

pistil

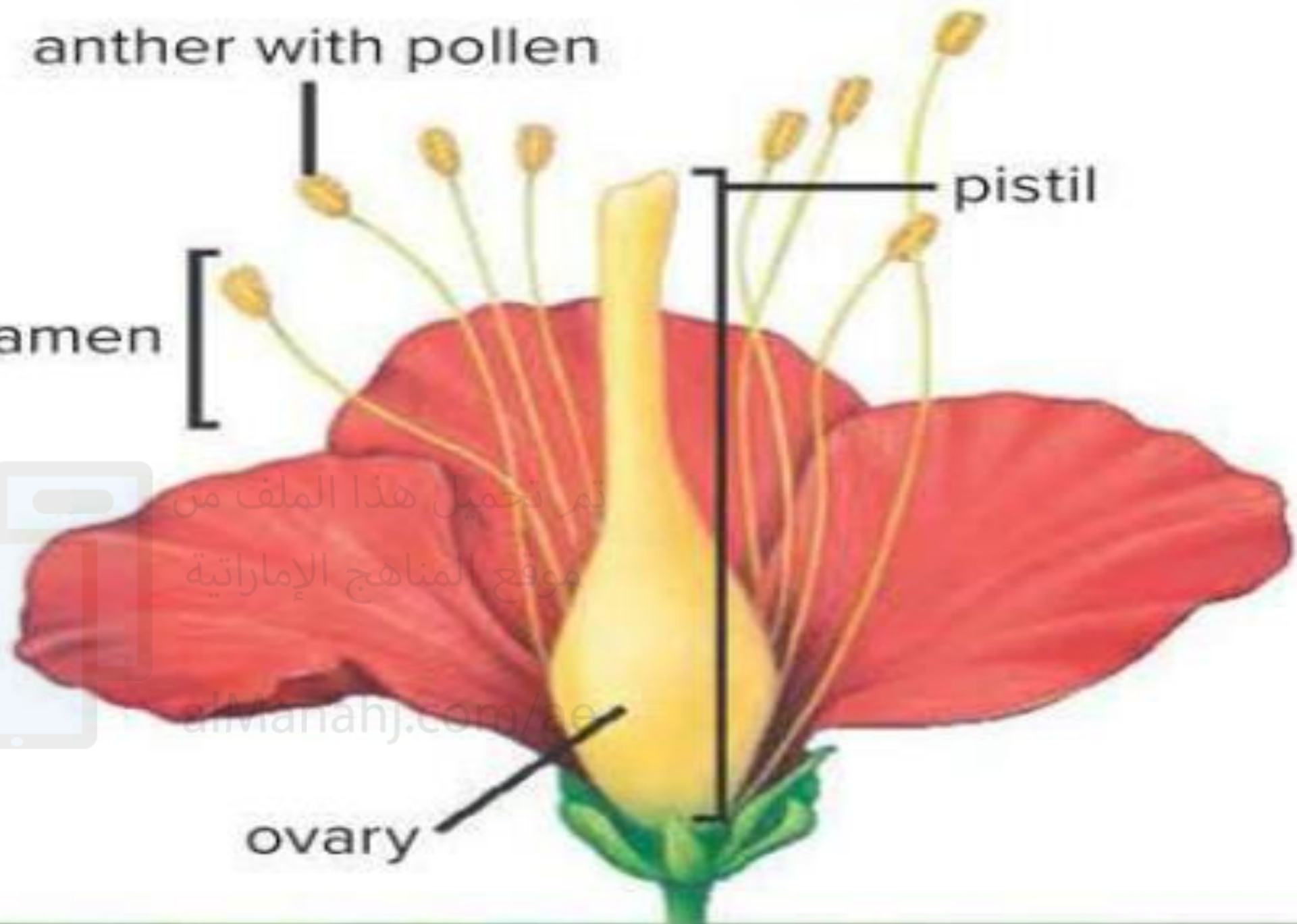
stamen

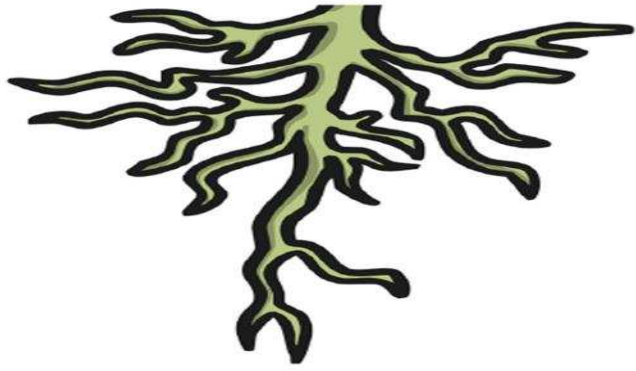
ovary



تم تحميل هذا الملف من
موقع المناهج الإماراتية

almanahj.com/ae





roots

جذور

ROOTS

Take in water and nutrients from the soil, hold the plant in place



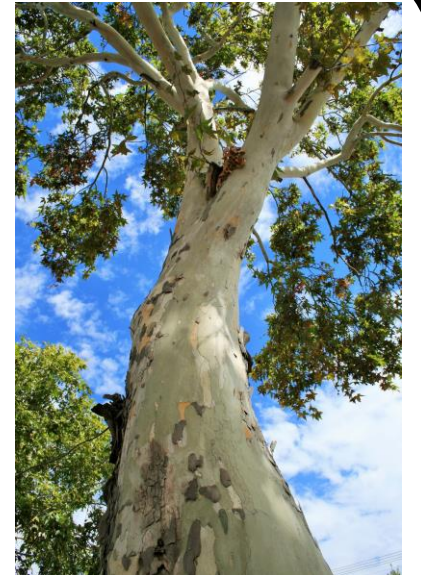
stem

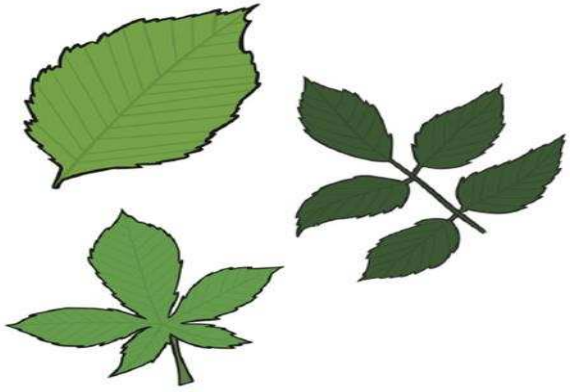
ساق

STEM

Supports the plant. Two types of stems. Woody and soft

Tree trunks are stems



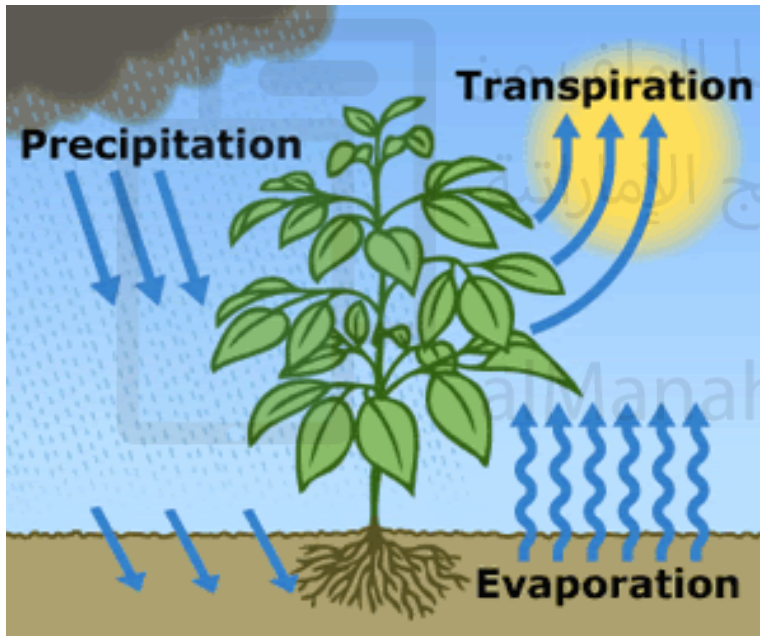


leaves

أوراق

LEAVES

The site of gas exchange and food production- Food is made in the leaves



TRANSPIRATION

Release of water vapour through an opening under the leaf

تنج



flower

زَهْرَة

FLOWERS

Contain male and female parts.



fruit

فَاكِهَة

FRUIT

Protects the seed



seeds

بُدُور

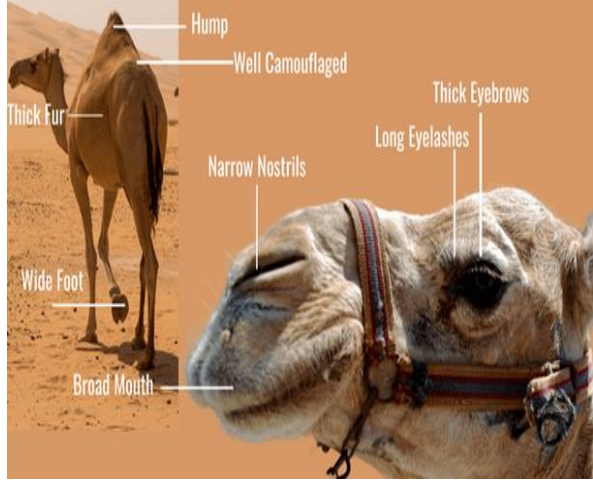
SEEDS

Contains an embryo surrounded by a food supply



CONES

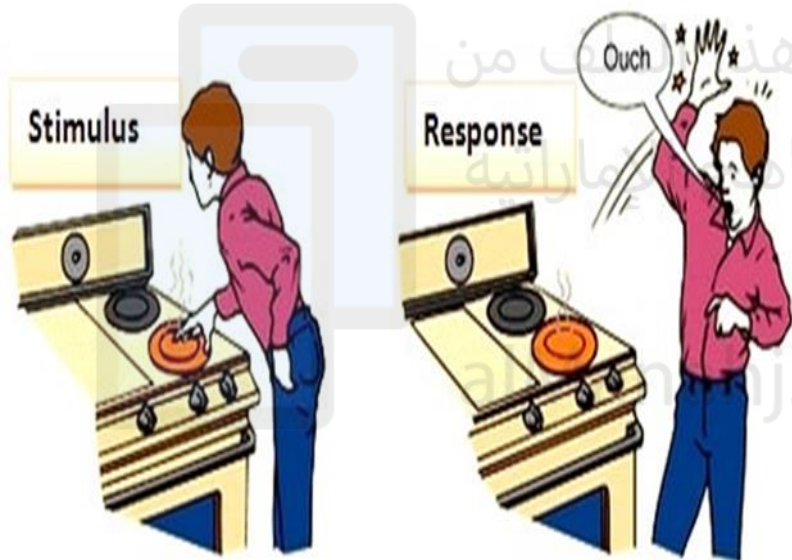
Some plants reproduce with cones



ADAPTATION

A trait that helps a living thing survive in an environment

تكيف



STIMULUS

Something in the environment that causes an action

حافز

Example 2



RESPONSE

A reaction to a stimulus

استجابة

PLANT TROPISMS

Phototropism

Plants response to
Light



Geotropism

Plants response to
gravity



Thigmotropism

Plants response to
touch



Hydrotropism

Plants response to
water



TROPISIM

A plants response to light,
water, touch and gravity

انتحاء

INTERNAL STRUCTURES

هياكل داخلية

Found **INSIDE** an organism's body



EXTERNAL STRUCTURES

هياكل خارجية

Found **OUTSIDE** an organism's body



STRUCTURAL ADAPTATION

تَكْيِف هَيْكَلِي

Inherited changes to physical features that help organisms to survive and reproduce

Structural adaptations

- A **structural adaptation** involves some part of an organism's body.
 - Teeth
 - Body coverings
 - Shells
 - Quills
 - Scales
 - Camouflage
 - Mimicry



I can identify an adaptation as structural, behavioral, or physiological.

CAMOUFLAGE

تَمْوِيَه

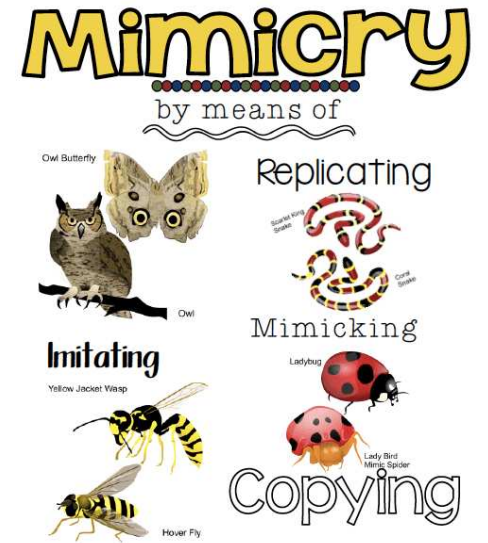
Allows an organism to blend into its environment



MIMICRY

تشابه

An animal is protected when it looks like a different animal or object



BEHAVIOURAL ADAPTATION

التكيف السلوكي

A change in an organisms behaviour

Behavioral adaptations

- Behavioral adaptations are actions that help an animal survive.
- They can be learned or instinctive.
- social behaviors
- behaviors for protection



STRUCTURAL ADAPTATION

تكيّف هيكلّي

Inherited changes to physical features that help organisms to survive and reproduce

Structural adaptations

- A **structural adaptation** involves some part of an organism's body.
 - Teeth
 - Body coverings
 - Shells
 - Quills
 - Scales
 - Camouflage
 - Mimicry



I can identify an adaptation as structural, behavioral, or physiological.

CAMOUFLAGE

تمويه

Allows an organism to blend into its environment



SENSORY ORGANS

Organs that gather information from OUTSIDE the body

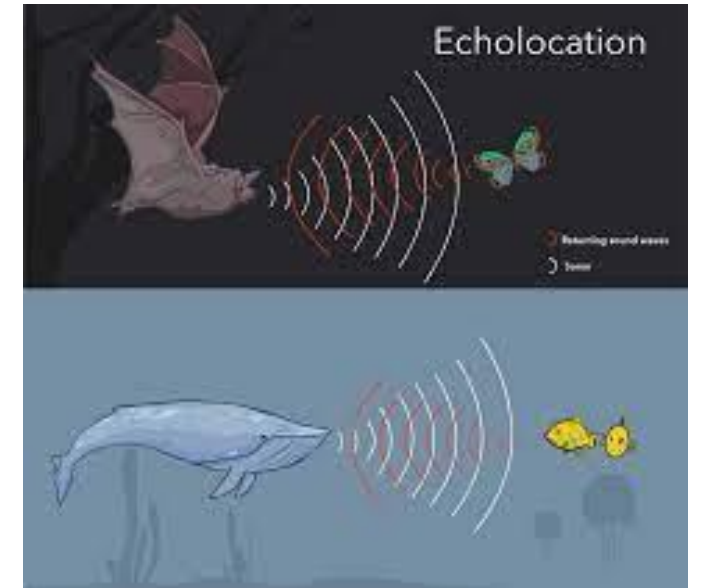
عضو حسي



ECHOLOCAATION

Process of finding an object by using reflected sound or echoes

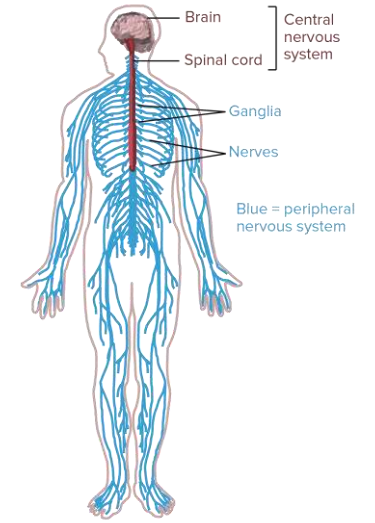
تحديد الموقع بصدى الصوت



NERVOUS SYSTEM

Organs that use information from the senses to control body systems

الجهاز العصبي



CENTRAL NERVOUS SYSTEM

الجهاز العصبي المركزي

Made up of the brain and spinal cord



BRAIN

Interprets messages and sends messages to other body parts

المخ



SPINAL CORD

Thick band of nerves inside the spine

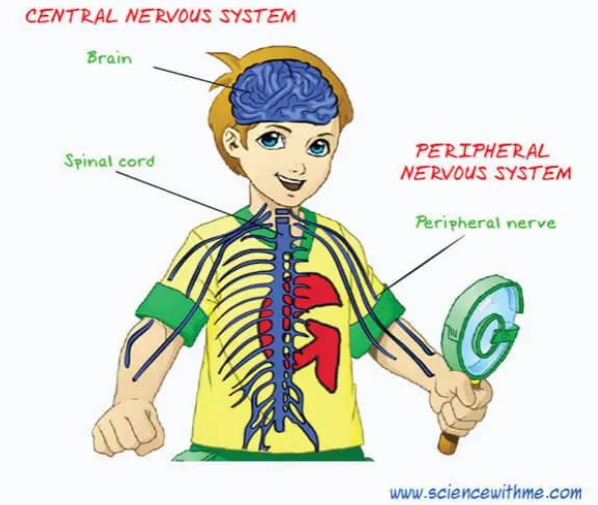
الحبل الشوكي



PERIPHERAL NERVES

NOT PART OF the central nervous system and receives sensory information. Outside the brain and spinal cord

عصب طرفي



REFLEX لا ارادي

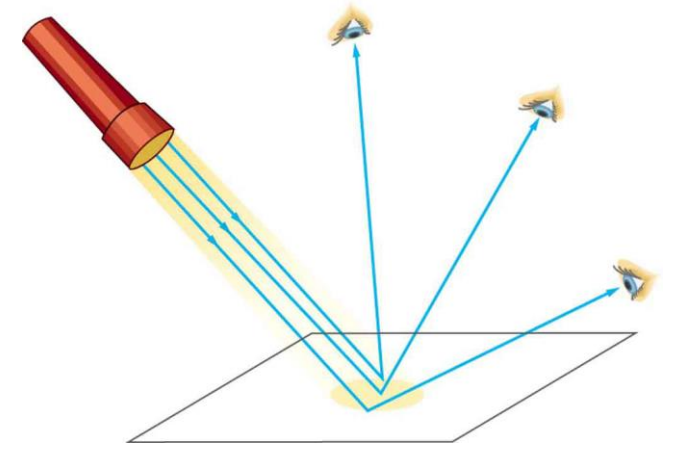
A quick reaction that happens without waiting for a message to be sent to the brain



shutterstock.com · 2080315072

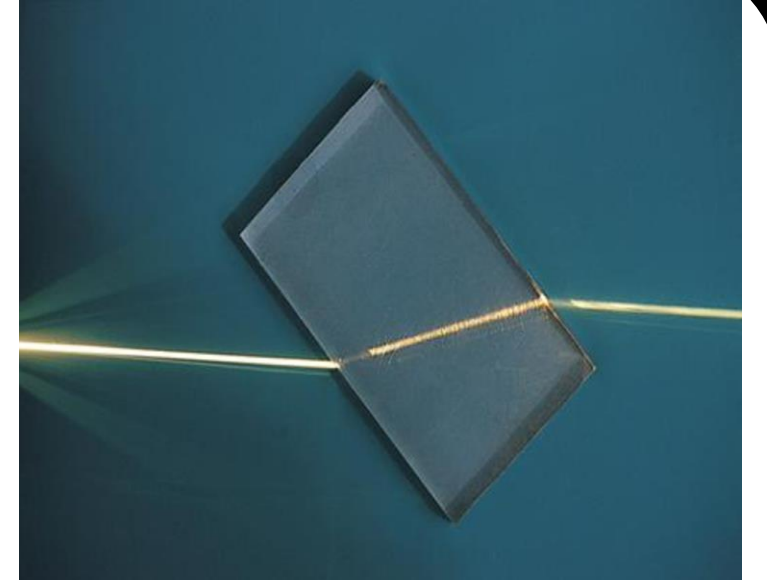
REFLECTION انعكاس

Bouncing of light waves off a surface



REFRACTION انكسار

The bending of light as it passes from one substance into another



IMAGE

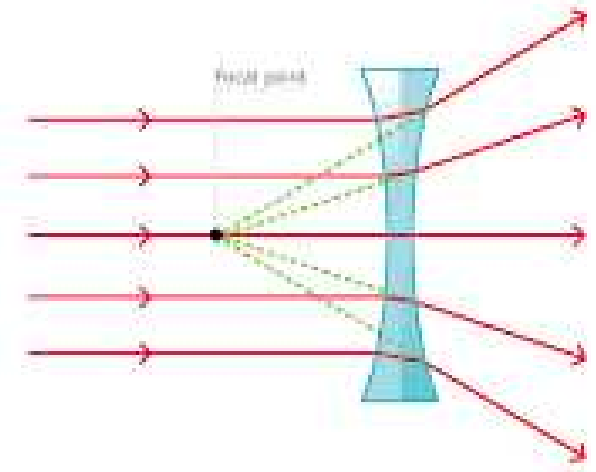
صورة «صورة»

A picture of the light source



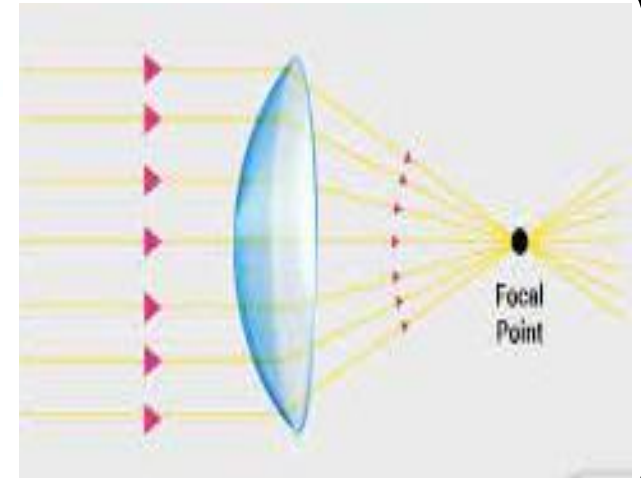
CONCAVE LENS عدسة مقعرة

A lens that is **THIN** in the middle. Spreads light **OUTWARDS**



CONVEX LENS عدسة مُحدبة

A lens that is **THICKER** in the middle and lets light come **TOGETHER** at a point



TRANSPARENT شفاف

Allows **ALL** light to pass through

Transparent

- ✓ Allows all or most light to travel through.
- ✓ It's possible to see clearly through transparent materials.



TRANSLUCENT نصف شفاف

Objects that allow **SOME** light to pass through

Translucent

✓ Allows some light to pass through.

✗ It's not possible to see through translucent materials.



OPAQUE غير شفاف

Allows **NO** light to pass through

Opaque

✗ Blocks all the light passing through.

✗ It's not possible to see through opaque materials.



COMPOUND EYES عيون مركبة

Eyes that have thousands of tiny lenses- like a fly



BINARY CODE شفرة ثنائية

System that represents letters using ones and zeros

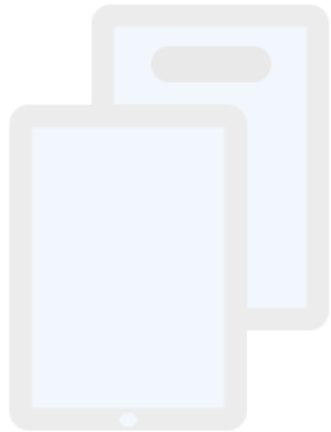
ALPHABET IN BINARY CODE

A	01000001	J	01001010	S	01010011
B	01000010	K	01001011	T	01010100
C	01000011	L	01001100	U	01010101
D	01000100	M	01001101	V	01010110
E	01000101	N	01001110	W	01010111
F	01000110	O	01001111	X	01011000
G	01000111	P	01010000	Y	01011001
H	01001000	Q	01010001	Z	01011010
I	01001001	R	01010010		

CODING

ترميز

Writing a computer program in a language that is used by the computer



تم تحميل هذا الملف من
موقع المناهج الإماراتية

alManahj.com/ae