

تم تحميل هذا الملف من موقع المناهج الإماراتية



الملف أوراق عمل شاملة باللغة الإنجليزية

[موقع المناهج](#) ⇨ [المناهج الإماراتية](#) ⇨ [الصف السادس](#) ⇨ [علوم](#) ⇨ [الفصل الثاني](#)

روابط مواقع التواصل الاجتماعي بحسب الصف السادس



روابط مواد الصف السادس على تلغرام

[الرياضيات](#)

[اللغة الانجليزية](#)

[اللغة العربية](#)

[التربية الاسلامية](#)

المزيد من الملفات بحسب الصف السادس والمادة علوم في الفصل الثاني

كل ما يخص الاختبار التكويني لمادة العلوم للصف السادس يوم الثلاثاء 11/2/2020	1
الكويت الصف السادس فترة ثلاثة علوم أوراق عمل الفصل الثاني 2016	2
دليل المعلم علوم الوحدة 14 (الطاقة والشغل)	3
ورقة عمل درس الطاقة	4
حل الكتاب للفصل الثاني منهج انجليزي	5

SCIENCE

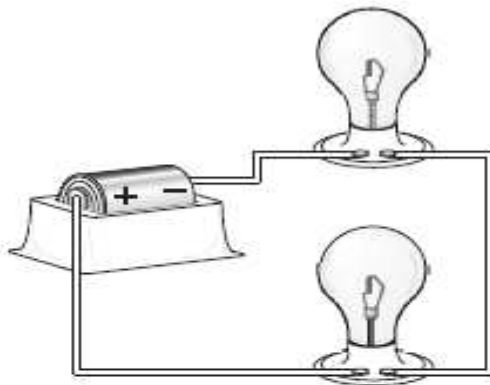
Circle the correct answers.

1 Why are *most* fossils found in sedimentary rocks?

- A Sedimentary rocks are not very old.
- B Organisms live only in areas with sedimentary rock.
- C Organisms can be preserved in sedimentary rock.
- D Sedimentary rocks are found only at the surface of the ground.

2

The diagram below shows an electrical circuit.



This circuit is a series circuit because

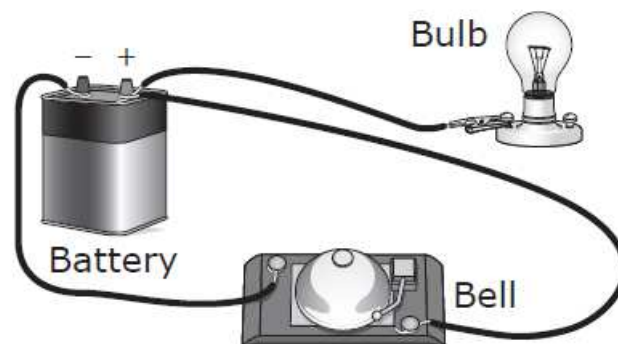
- A it has two light bulbs.
- B the same current flows through both light bulbs.
- C it uses a single battery.
- D the current is divided between the light bulbs.

- 3 Students are gathering materials and building an electrical circuit.



Which material will allow electricity to flow between the battery and the light bulb?

- A copper wire
 - B wooden rod
 - C cotton string
 - D rubber tube
- 4 A group of students built the circuit shown below.



The lightbulb does not glow. Which statement explains this observation?

- F The battery is not charged.
- G The lightbulb is not part of a complete circuit.
- H The circuit does not have a switch.
- J The bell uses most of the energy from the battery.

5 Salman measures the length of a leaf with a centimetre ruler.

What is the length of the leaf?

- A 3 cm
- B 6 cm
- C 9 cm
- D 12 cm

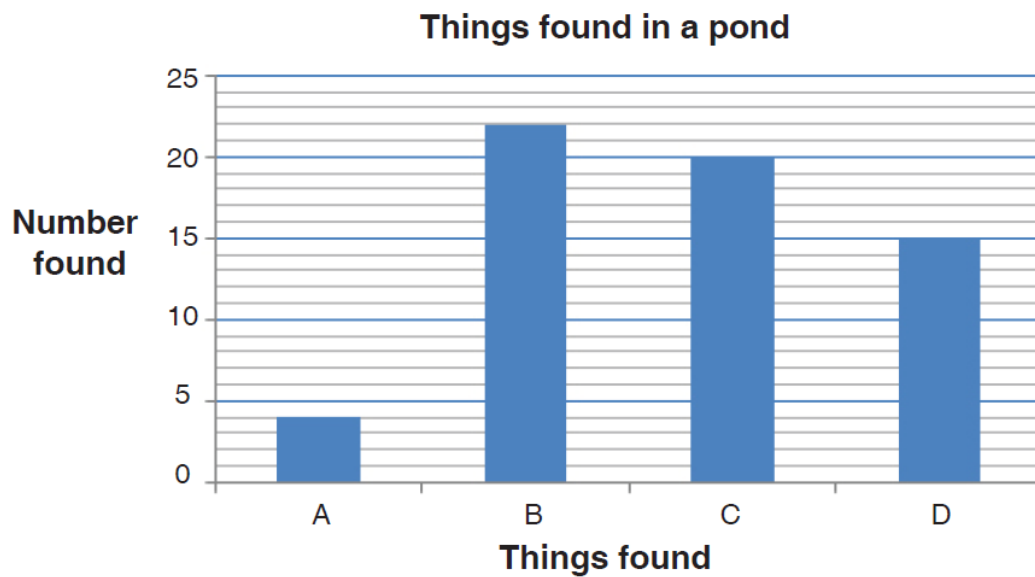


6 Vishal found these things in a pond:



Things found	Number found
tadpoles	20
frogs	4
stones	22
lilies	15

He made a column graph to show what he found.



Which column on the graph shows the number of lilies Vishal found?

- A Column A
- B Column B
- C Column C
- D Column D

7 Which of these spends its young life **only** in water?



A



B



C



D

8 Which property of air allows hot air balloons to float?

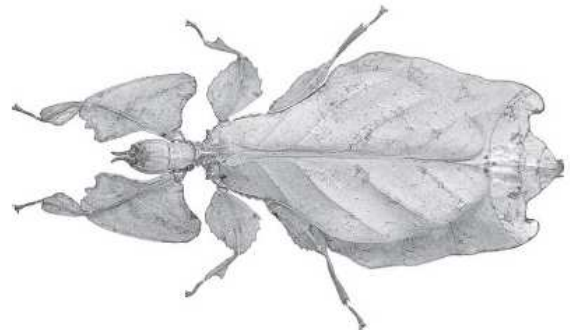
- A** air traps the warmth of the sun
- B** air is important for breathing
- C** air is a mixture of gases
- D** warm air rises



9 Camouflaged animals look like the things around them.

Where would this camouflaged insect most likely live?

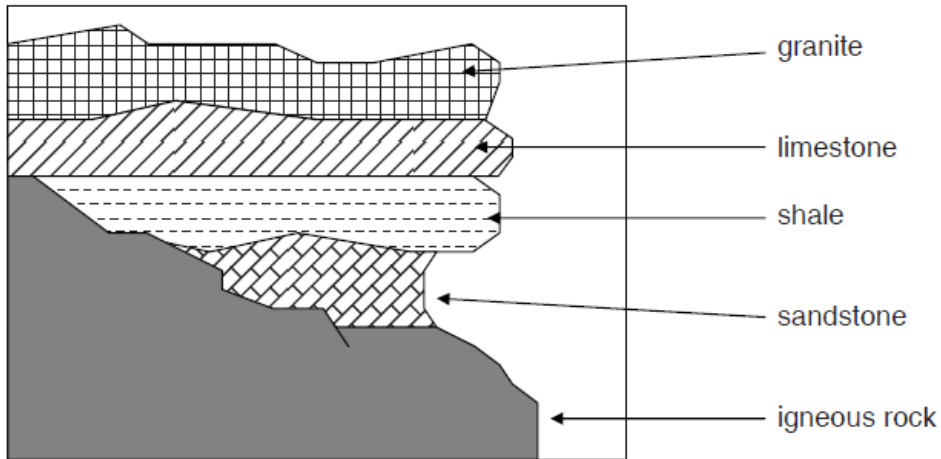
- A** in a tree
- B** on a beach
- C** under water
- D** in a desert



10 Which two planets are most similar in size?

- A** Jupiter and Saturn
- B** Earth and Venus
- C** Uranus and Neptune
- D** Mercury and Mars

11



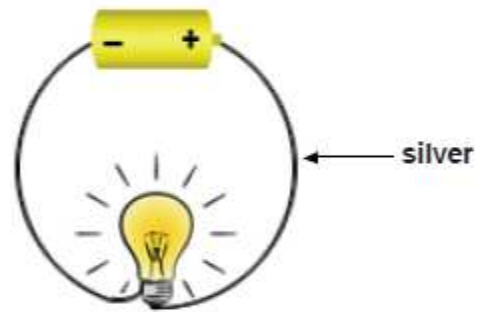
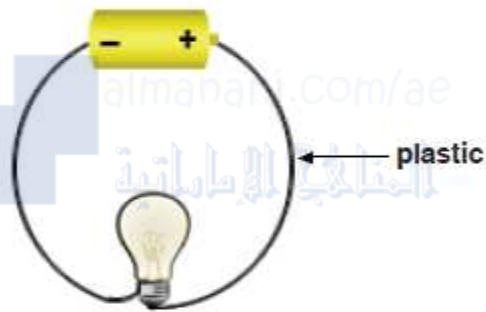
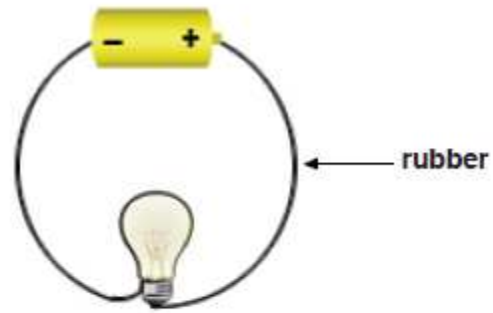
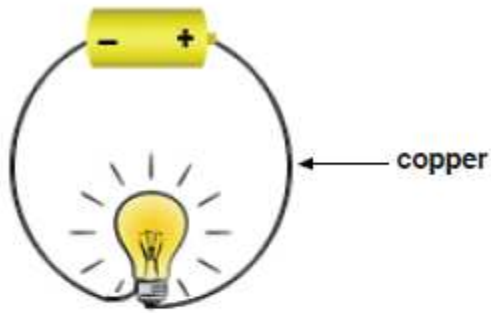
Which rock layer is the oldest?

- A granite
- B limestone
- C sandstone
- D igneous rock

12 Which row correctly groups these energy sources?

	Renewable (will not run out)	Non-renewable (will be used up)
A	wood, solar power	gas, petrol
B	gas, petrol	wood, solar power
C	petrol, wood	solar power, gas
D	solar power, gas	petrol, wood

13 Substances that allow electricity to flow through them are called conductors.



What conclusion can be made from the above experiment?

- A Only copper and silver are conductors.
- B Only rubber and plastic are conductors.
- C None of these substances are conductors.
- D All these substances are conductors.

14 Shenaz is not sure if the tap water is safe to drink.

What can Shenaz do to make the water safe to drink?

- A boil the water
- B freeze the water
- C keep the water at a constant temperature
- D store the water for few days and then use it



15



Using this system, the animal above is best classified as

- A a vertebrate.
- B a soft-bodied invertebrate.
- C a fish.
- D an insect.

www.abunahj.com/ae
المنهج الإماراتية

16 | Using this classification system, a lobster is best described as

- A a vertebrate with an exoskeleton.
- B an invertebrate with a soft body.
- C an invertebrate with an exoskeleton.
- D an animal that lives in a marine environment.

